



HAYMAN
INDUSTRIES PTY LTD
MANUFACTURING SOLUTIONS

LIGHTING POLE RANGE



ABOUT US

Hayman Industries is a fully Australian owned and operated manufacturing company specialising in steel fabricated products for the electrical distribution and infrastructure industries.

With manufacturing facilities based in Minto, New South Wales, we are proud to be one of the few existing companies that still manufacture majority of products within Australia - providing livelihoods for Australian people and ensuring local economies benefit from our activities.

In 2003, Hayman Industries expanded its range into the field of street lighting columns and has since become an accredited supplier of these products to the energy distribution sector. In recent years, this range has been enhanced to include tapered steel monopoles for power transmission and distribution,

field lighting columns, traffic signal columns, V.M.S. structures and other associated poles and columns.

This has been made possible with the advent of additional Directors to the Board of Hayman Industries with a combined 60 plus years of experience in design, manufacture, and supply of these products.

With the additional resources and experience now available within the company, Hayman Industries has invested substantially in overseas supply chains for the provision of these new products. Our suppliers are one of the largest pole manufacturers in the world with capacity to produce 200,000 poles per annum. Locally domiciled Hayman Industry representatives ensure adherence to our design and quality assurance requirements and

internationally reputed carriers ensure safe and reliable carriage of our goods to Australia.

Our strength rests in the people who work for us - their experience, knowledge, attitude, and commitment to the principles that have governed and established Hayman Industry's reputation over its history.

Our philosophy is centred around an unwavering focus on the customer, with integrity in whatever we do. Add to that Quality Accreditation to ISO 9001:2008, and substantial progress towards accreditation to AS4801 and ISO 14001, and you have a company that believes in the best for its customers, its products, its people and the environment.

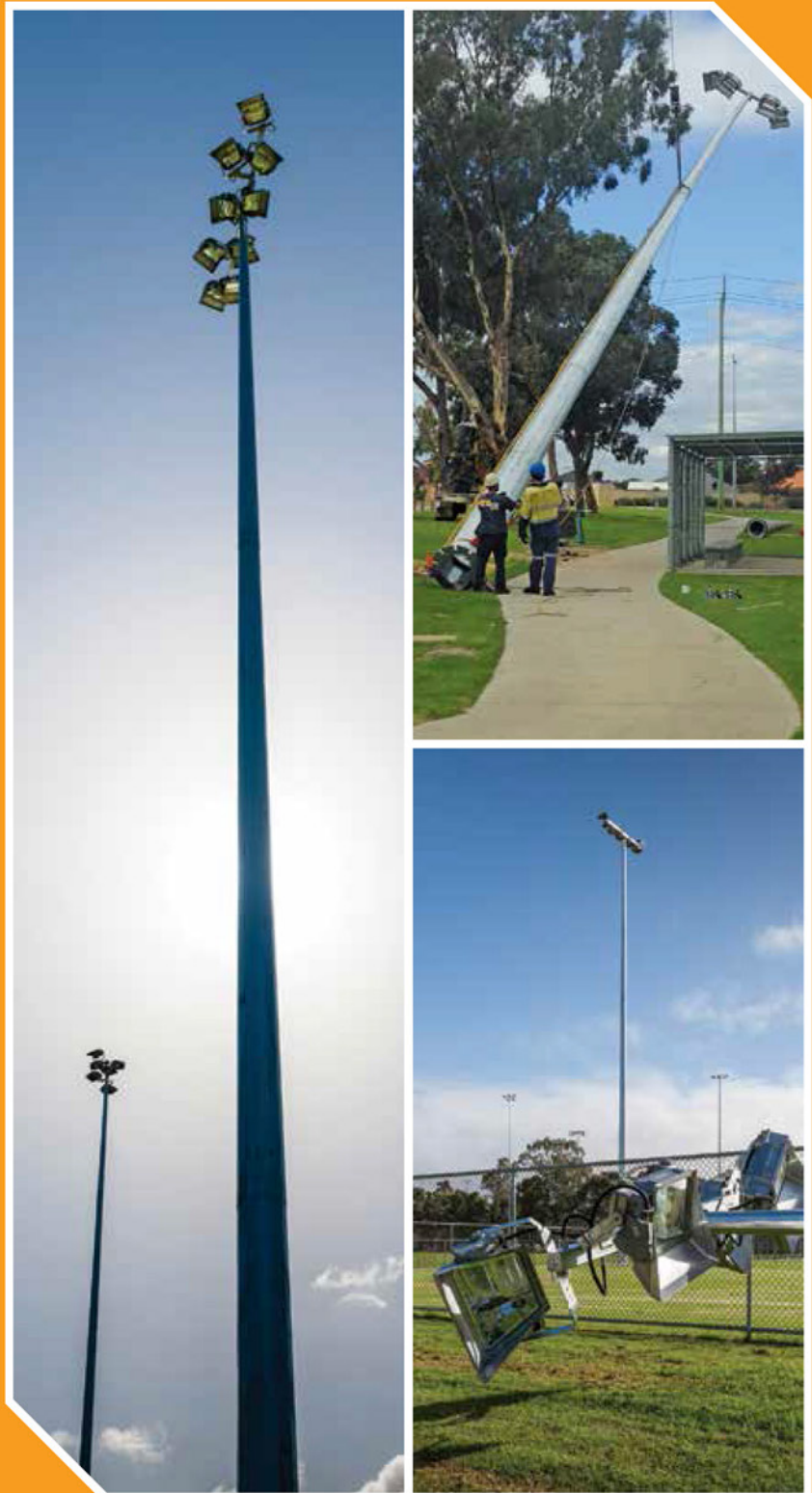


PRODUCT DEVELOPMENT

Hayman Industries is committed to, and has invested substantially in a design team headed by a Senior Structural Design Engineer with over 18 years of specialised expertise in the design of pole structures - and, in particular, power transmission poles. Highly qualified drafting staff man the latest three-dimensional CAD/CAM software, translating concepts into reality. Maintaining and developing a local engineering resource permits Hayman Industries to develop close relationships with its customers and their particular needs.

Engineering design is performed in accordance with the current Australian Standards (or specified International Standards) utilising in-house developed software. Our extensive pole engineering experience permits the most efficient designs to be produced, without compromising safety or quality. Three-dimensional modelling software allows designs to be conceived and developed with a high degree of accuracy in a minimal timeframe. Whenever possible, we welcome the opportunity to meet face-to-face with our customers to discuss any design aspect. Our team is always 'ready-to-go' and looks forward to developing successful and efficient solutions.

Hayman Industries also has the ability to custom design poles to any requirement.



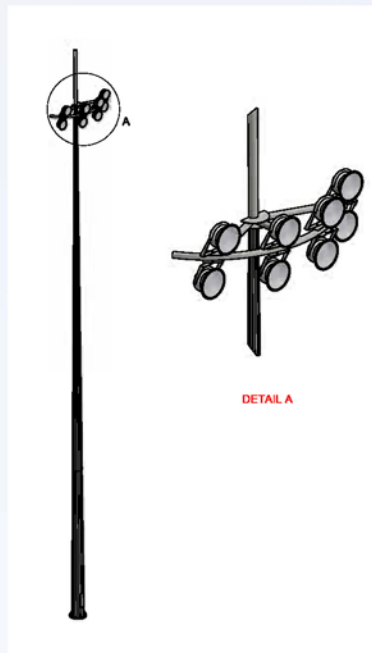
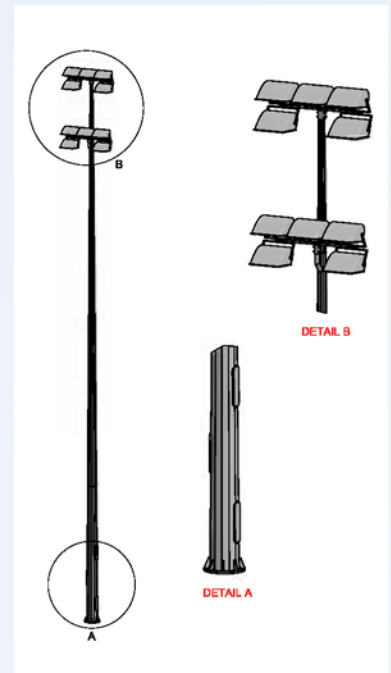
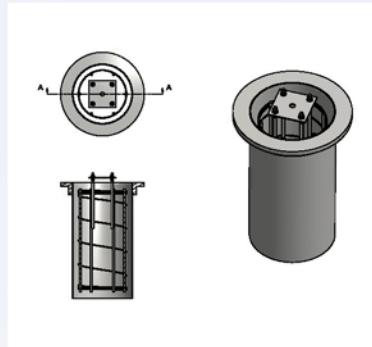
LIGHTING POLES

Hayman Industries offers an extensive range of lighting pole products and accessories.

Using long standing manufacturing know-how, along with modern processes in production, Hayman Industries offers quality poles for a variety of applications such as general purpose lighting, street lighting and high performance sports field illumination.

Standard lighting poles range from 4.5 meters to 30 meters in height. Our industry experienced in-house engineers use advanced software programs to produce custom design poles and accessories to meet special design requirements.

Hayman Industries is a prominent player in the lighting pole market and prides itself on its high standards of product design, manufacture and performance. Commitment to client satisfaction is assured throughout the development, design, fabrication and installation stages.



OPTIONS & ACCESSORIES

- Headframes to suit particular lighting arrangements
- Holding down bolts and bolt templates
- Standard footing designs and supply of footing reinforcement
- Multiple access doors
- Climbing facilities
- Dual coat finishes
- Maintenance platforms
- Lightning spires
- Lockable access doors

STANDARD LIGHTING POLE RANGE

PRODUCT CODE	Nominal Pole Height (m)	Allowable number of floodlights per pole		Pole Dimensions				Footing Design Actions	
		Wind Region A		Top OAF (mm)	Bot OAF (mm)	Bolt Configuration	Door size Length (mm) x Width (mm)	Ultimate Base Moment (kNm)	Ultimate Base Shear (kN)
		Tcat 2	Tcat 3						
HI-FL-045-A	4.5	3	3	75	160	4M20-233	300x110	5.5	1.6
HI-FL-06-A	6	3	3	75	160	4M20-233	300x110	9.5	2.1
HI-FL-08-A	8	2	2	75	160	4M20-233	300x110	11	2
HI-FL-08-01	8	5	5	75	266	4M24-350	600x170	26	4.2
HI-FL-10-A	10	3	4	75	210	4M24-350	400x130	24	3.6
HI-FL-10-01	10	5	5	75	266	4M24-350	600x170	32	4.6
HI-FL-12-A	12	2	3	75	236	4M24-350	400x130	32	4.3
HI-FL-12-01	12	3	4	75	266	4M24-350	600x170	32	4.4
HI-FL-15-01	15	1	2	75	266	4M24-350	600x170	33	4.5
HI-FL-15-02	15	3	3	75	266	4M30-350	600x170	63	6.5
HI-FL-18-01	18	4	5	100	327	4M30-500	800x200	93	8.9
HI-FL-18-05	18	7	7	131	402	6M30-560	800x200	158	13.3
HI-FL-20-01	20	2	4	100	352	4M30-500	800x200	95	8.9
HI-FL-20-03	20	6	6	100	402	6M30-560	800x200	158	13.3
HI-FL-22-01	22	1	3	100	378	4M30-500	800x200	95	8.6
HI-FL-22-02	22	6	6	115	449	6M30-560	800x200	171	14.8
HI-FL-25-01	25	2	4	100	410	6M30-560	800x200	150	12.5
HI-FL-25-01B	25	4	4	100	438	6M30-560	800x200	156	13
HI-FL-25-02	25	5	5	100	470	8M30-580	800x200	235	17.2
HI-FL-25-03	25	8	8	146	517	8M30-660	800x200	250	17.9
HI-FL-25-05	25	12	12	184	614	12M30-800	800x200	389	24.5
HI-FL-28-01	28	5	5	100	517	8M30-660	800x200	250	17.6
HI-FL-28-04	28	9	9	130	615	12M30-800	800x200	389	23.7
HI-FL-30-02	30	6	7	130	590	10M30-700	800x200	322	21.2
HI-FL-30-04	30	11	11	166	686	12M30-800	800x200	495	29.6

Pole Design and Manufacture

AS/NZS 4600:2005 Cold formed steel structures
 AS/NZS 4100:1998 Steel structures
 AS/NZS 1170.0:2002 Structural design actions
 AS/NZS 1170.2:2011 Wind loads
 Steel in accordance with certified international standards, comparable to equivalent Australian Standards
 Weld quality in accordance with AS/NZS 1554.1:2011
 Tolerances in accordance with AS/NZS 4677:2010 Steel utility services poles
 Hot dip galvanising after all fabrication in accordance with AS/NZS4680:2006
 All poles tapered steel multisided

Technical Data

Allowable number of floodlights per pole is based on typical floodlights used for sportsgrounds
 Wind region A (normal) includes sub regions A1 to A7 in accordance with AS/NZS 1170.2
 Wind loading is based on a 500 year average recurrence interval with a basic wind speed of 45m/s and M_d , M_s & $M_t = 1$
 Tcat 2 = Terrain category 2 (open terrain, grassland with few, well-scattered obstructions having heights generally from 1.5m to 10m)
 Tcat 3 = Terrain category 3 (terrain with numerous closely spaced obstructions 3m to 5m high, such as areas of suburban housing)
 For wind region B, wind region C (cyclonic), wind region D (severe cyclonic) and other wind criteria, consult with Hayman Industries

CUSTOM DESIGN

Hayman Industries has developed a number of pole ranges to suit industry needs. These ranges represent the common sizes requested and include features typically required. Although some items may be held in stock, the majority are 'made-to-order' and can be readily customised to

customer specific requirements prior to hot-dip galvanising. Modification of stocked poles, such as drilling extra holes, or fabrication of additional minor pole items and other steel utility items - can be readily performed in our production facility in Minto, N.S.W., with a speedy turnaround time.

Pole data, for modelling in PLS Pole, is available upon request.

OFFSHORE MANUFACTURING CAPABILITIES

- Decoiler and Shear line
- 2500t Brake Press (capacity to press poles with wall thicknesses up to 30mm)
- Automatic Plasma cutting, Flame cutting, Seam welding and Flange welding machines
- Straightening machines
- CNC Punching machines
- Capacity to produce poles with diameters ranging from 60mm to greater than 3000mm
- Capacity to produce poles in heights from 3m to greater than 75m
- Capable of producing poles for any requirement from small pathway poles to large stadium poles
- Annual production capability = 100,000 tons
- *All fabrication monitored and inspected by local Hayman Industries own personnel in China*



LOCAL MANUFACTURING CAPABILITIES

- Structural fabrications
- CNC Beam Line Drilling of structural steel selections, plates and RHS
- MIG and TIG welding
- Hot forging and hot bending of small to medium steel products
- Presswork up to 500 tonnes capacity
- Screwing – M16 to M36
- CNC cutting of merchant bar and structural steel to specific lengths



PRODUCT LIST

Electrical Power

Transmission Line Products

- Insulator Straps for concrete, steel and wood poles
- Eyebolts
- J Hooks
- Hook Bolts
- Weak Links
- Hook Brackets
- Transformer hanging brackets
- Eye nuts
- Regulator Platforms
- Braces
- Pole bands
- Steel Cross arms
- Pole Steps
- Pole top brackets
- Earthing clips
- Stay rods
- Link plates
- ABC fittings
- Yokes
- Q hooks
- UGOH brackets

Poles and Accessories

- Power transmission poles
- Street lighting columns and outreaches
- Traffic signal posts
- Sign mounting structures and variable message sign structures
- Camera poles
- Special purpose poles
- Ragbolts and foundation bolts
- Sportslighting
- Multi-function poles

Downee Elgate Fence and Gate Fittings

- Universal fence fitting systems
- Safety Gate latches
- Pipe clamps
- Bolt and Gate Accessories
- Caps
- Sliding door systems and tracks
- Brackets
- Rural fittings
- Flanges
- Farm gate packs
- Temporary Fence fittings
- Ring chain catches
- Hinges
- Gudgeons
- Gate hinge gudgeon straps
- Catches and Latches
- Bolt through gudgeons, combination straps
- Double gate and field gate fasteners

Pipe Supports

- Spring isolation hangers, channel framing systems and accessories
- Pipe insulation ferrules
- Pipe clamps
- Pipe supports for power stations, refineries and chemical plants
- U bolts and hanger rods
- Hanger rod and beam attachments
- Pipe rollers and pipe shoes

Almetek Identification Systems

- E-Z tag pole numbering systems
- Pressure sensitive stickers (numbers and alphabets)
- Private pole signs and labels
- Rural addressing
- HDPE signs coextruded (standard & custom made)
- Ultima Engraced HDPE tags
- Marina signs
- Drain and cable markers
- Variety of other signs and asset identification options

CONTACT US

Sydney (Head Office)

119 Airids Road
Minto NSW 2566
T. 02 8796 2600
F. 02 8796 2655
E. sales@haymanindustries.com.au

Brisbane

8A/600 Sherwood Road
Sherwood QLD 4075
T. 07 3077 6792
E. sales@haymanindustries.com.au

National Sales

4/224-226 Richmond Road
Marleston SA 5033
Paul Tessari
M. 0428 420 811
E. paul@haymanindustries.com.au

Perth

4/42 Commerce Ave
Armadale WA 6112
Denholm Griffin
M. 0438 731 304
E. denholm@haymanindustries.com.au

Call 1800 639 345

www.haymanindustries.com.au

ABN 83 000 220 771

